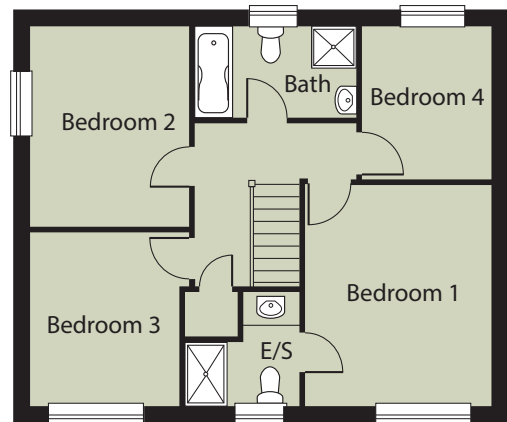


## Ground Floor

Lounge	4875mm x 3400mm	16'0" x 11'2"
Study	2050mm x 2300mm	6'9" x 7'6"
Cloaks	2000mm x 1100mm	6'7" x 3'7"
Dining	3200mm x 2850mm	10'6" x 9'4"
Kitchen	3800mm x 2850mm	12'6" x 9'4"
Utility	1600mm x 2000mm	5'3" x 6'7"



## Upper Floor

Bed 1	4050mm x 3400mm	13'3" x 11'2"
En Suite	2100mm x 2100mm	6'11" x 6'11"
Bed 2	3700mm x 2950mm	12'2" x 9'8"
Bed 3	3200mm x 2750mm	10'6" x 9'0"
Bed 4	2850mm x 2400mm	9'4" x 7'10"
Bathroom	1700mm x 3000mm	5'7" x 9'10"